

4. Install a local (LAN) printer

● Install a local (LAN) printer manually

☐ Install a local (LAN) printer manually for WIN 10

It is also suitable for a remote (cloud) printer installation.

To install the printer manually, you need to prepare your printer driver in advance and extract the INF file for standby.

Then install a printer according to your PC wizards.

(1) Prepare the driver file

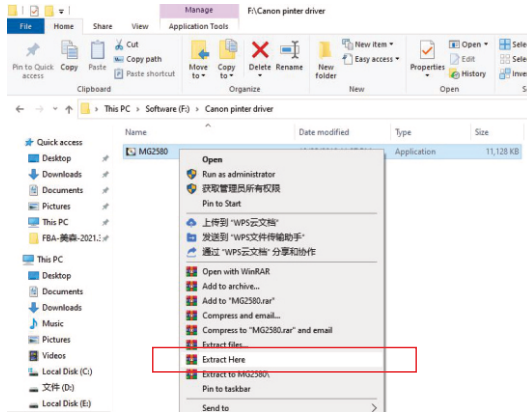
(If you have installed the printer driver on your PC before, you can ignore this step.)

1. Please search and download the (standard) printer driver corresponding to your printer model and pc system (32 / 64 bit) on the official website of your printer brand or the third-party professional printer driver (software) download website, and save it to your computer for standby.

The original driver CD provided by the printer manufacturer is also supported.

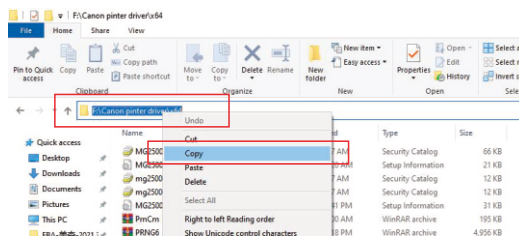
Tip: Please make sure that what you downloaded is the standard printer driver, and it include the INF file.

2. Right click the compression package of the downloaded driver file and Select "extract here..." to extract it.



3. Open the unzipped folder of the printer driver, click in the file path box above, select the file path (be sure to click in the file path box), and then right-click to copy the file path.

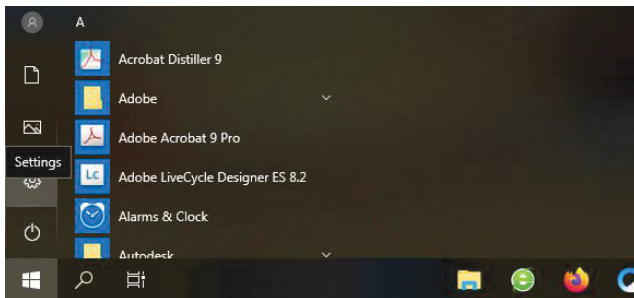
The file path format is usually (e.g.): F:\xxxxx\xxxxx
Not (e.g.): > PC > (F:) > XX folder



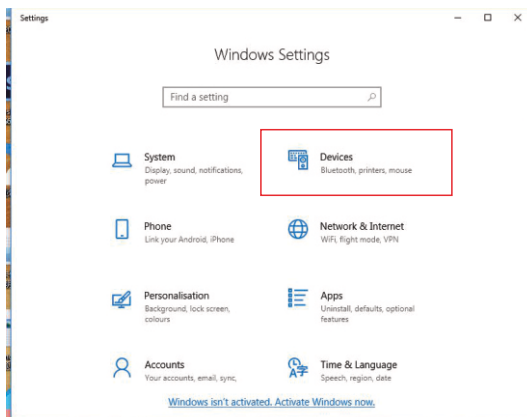
It copied above is the path of folder of containing the printer driven inf file which is required for later printer driver installation.

(2) Install a printer

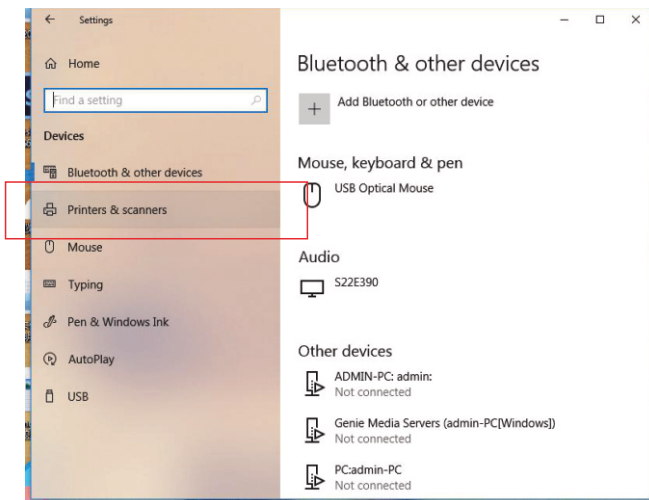
1. Open your PC "Settings" on the "Start"



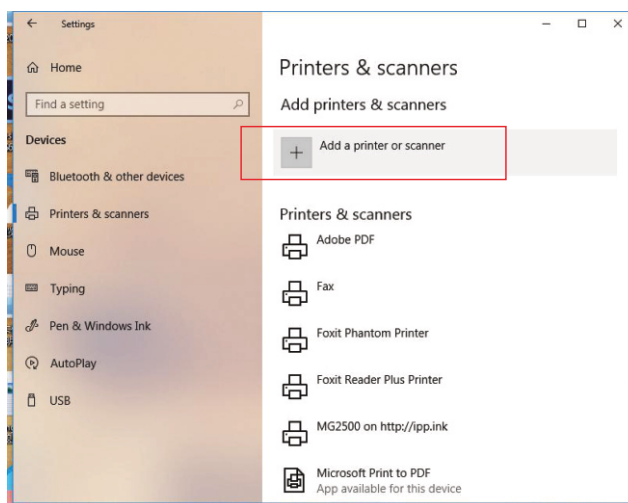
2. Click the "Devices".



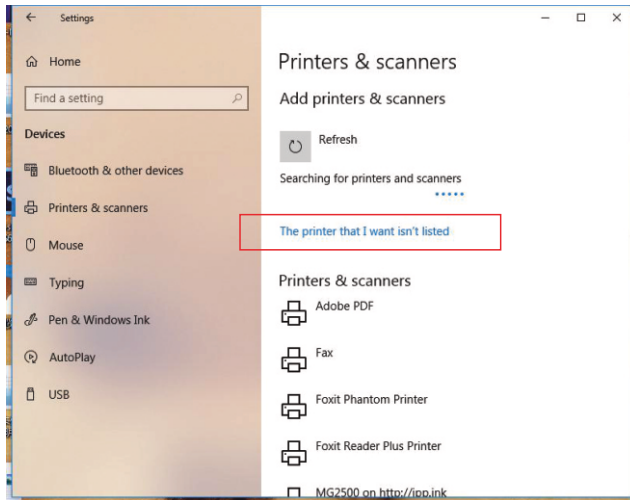
3. Click the “Printers & Scanners”



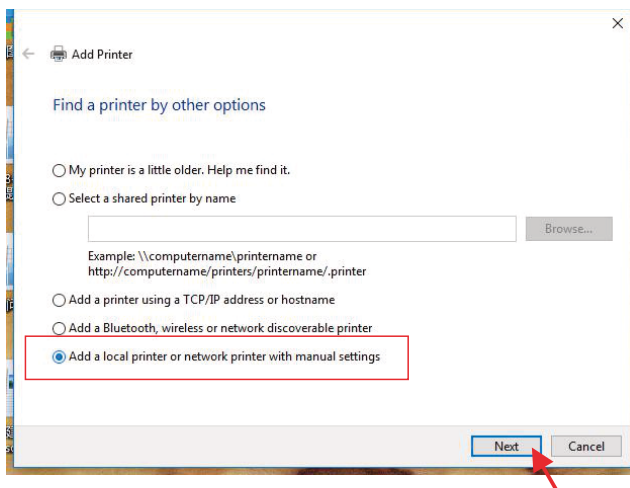
4. Click the “Add a printer or scanner”



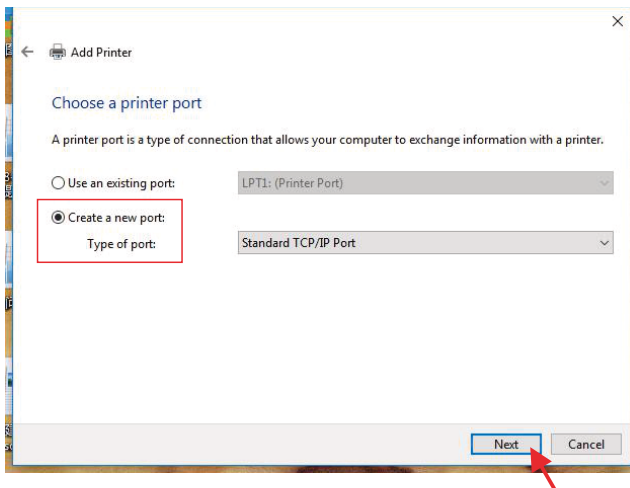
5. Click "The printer that I want isn't listed"



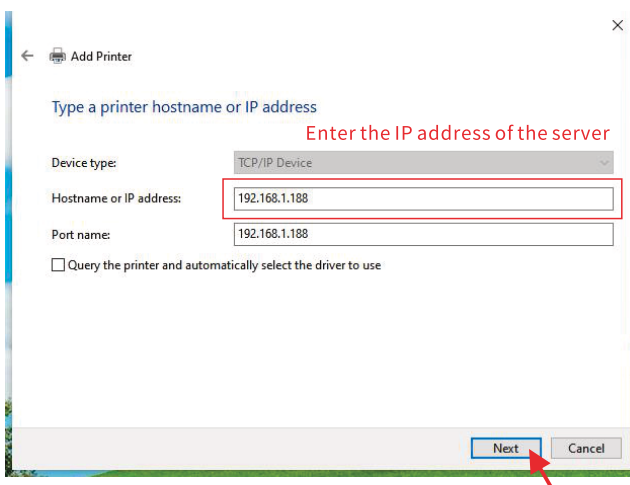
6. Select "add a local printer or network...", and then click "Next".



7. Select "Create a new port", Type of port: "standard TCP / IP port", and click "Next".



8. Enter IP address and port name. Uncheck "Query the printer and automatically select...", Then click "Next".

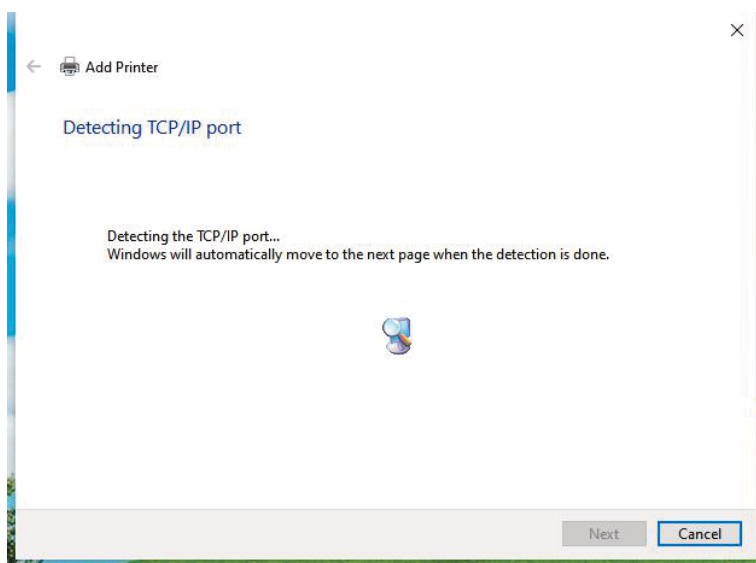


Tips:

For the IP address here, please enter the IP address that you get and record when setting up the wireless / wired connection.

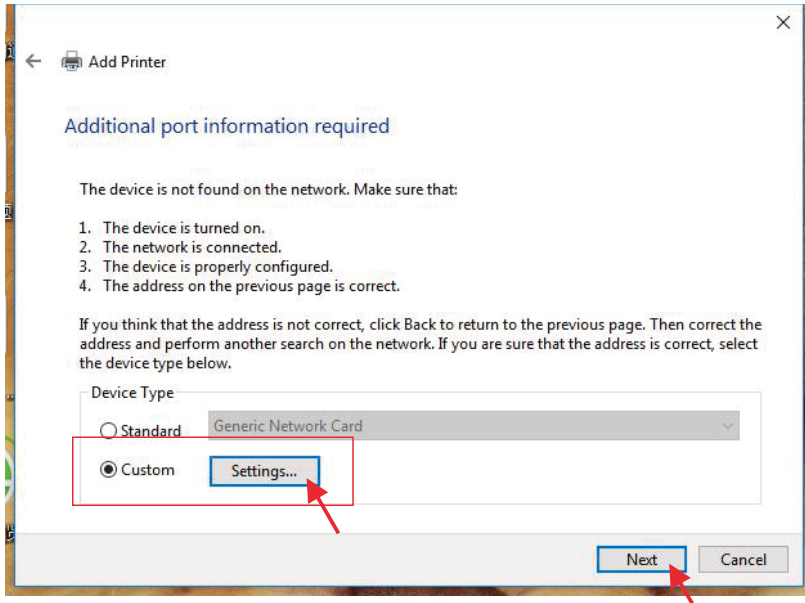
The port name is used to distinguish ports and can be named according to yourself.

9. Detecting the port, you need to wait patiently for 60 ~ 120 seconds



10. The detection port is finished. Generally, it will prompt that the device is not found and additional port information required.

Select "Custom" and click "Settings"

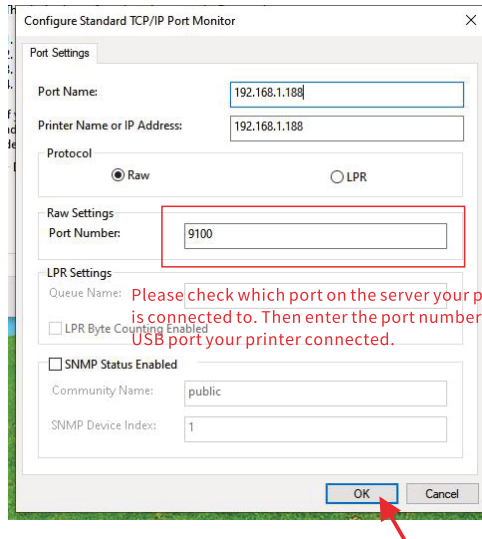


11. Set the port information. Here we need to check the IP address and set the port number, and then click "OK".

Please check which port on the server your printer is connected to. Then enter the port number which USB port your printer connected.

You can view it on the spot or enter the "Post list" page in the background of the server to view.

Port number range: 9100 ~ 9104

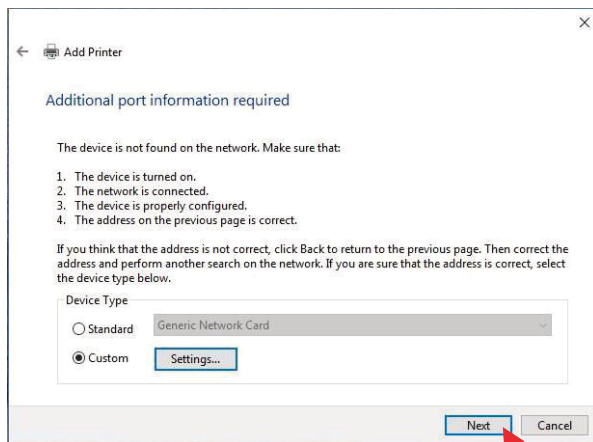


Corresponding port number of the USB port :

Usb1 is 9100, Usb2 is 9101, Usb3 is 9102, Usb4 is 9103...

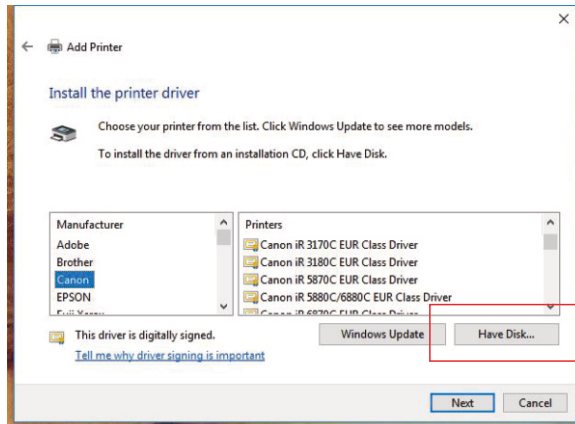
(The USB ports may be different for different models of products)

12. Click “OK” to click “Next” .



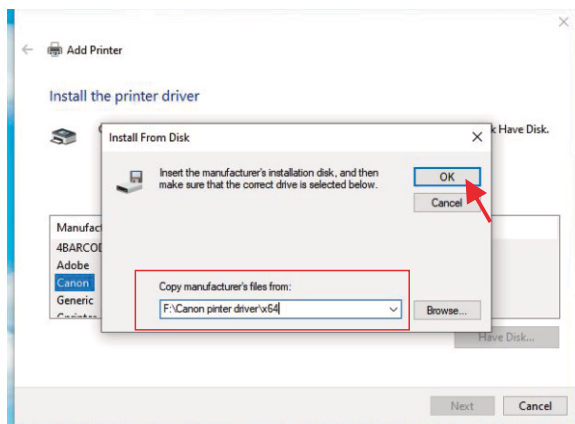
13. Install the printer driver, select "Have disk".

If you can find the driver matching your printer model in the list of manufacturers on the left and the list of printer models on the right, you can directly select and install it. Needn't installing it from disk again!

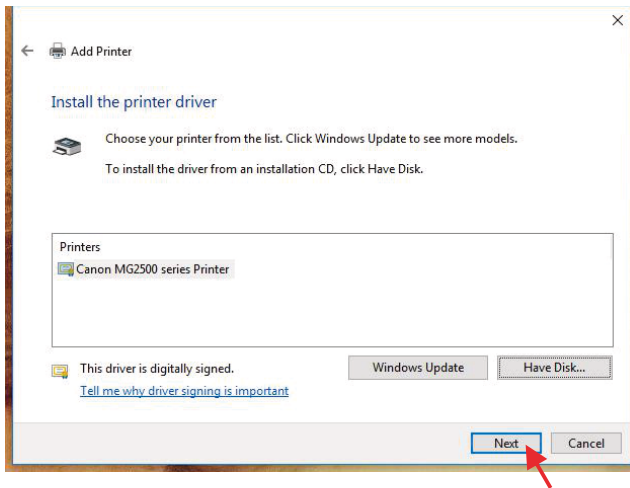


14. Paste the path of the folder containing the printer driver INF file that we copied earlier into the path box and click "OK".

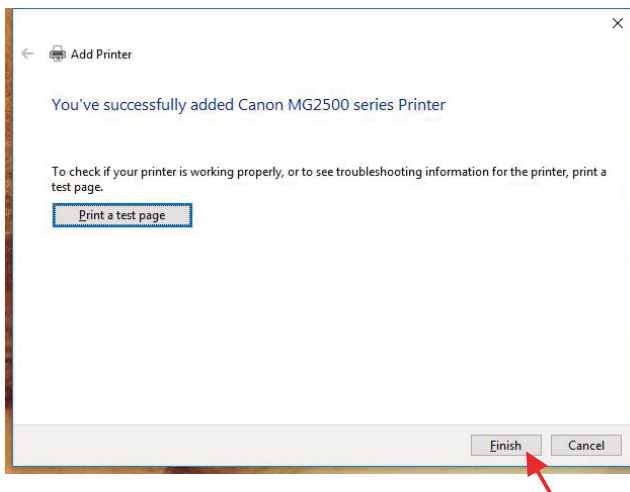
You can also "Browse" to find the "Inf" file in the driver folder and select to open it.



15. Select the printer you want to install and click “Next”



16. Then all are default and click "Next". If you have special needs, please modify them by yourself.



It's finished that install a local(LAN) printer on WIN 10 manually !

☐ Install a local (LAN) printer manually for WIN 7

It is also suitable for a remote (cloud) printer installation.

To install the printer manually, you need to prepare your printer driver in advance and extract the INF file for standby.

Then install a printer according to your PC wizards.

(1) Prepare the driver file

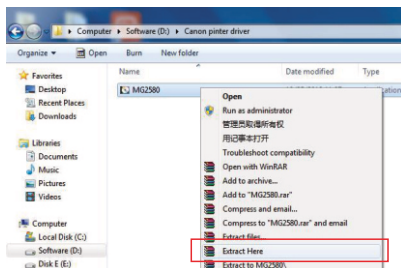
(If you have installed the printer driver on your PC before, you can ignore this step.)

1. Please search and download the (standard) printer driver corresponding to your printer model and pc system (32 / 64 bit) on the official website of your printer brand or the third-party professional printer driver (software) download website, and save it to your computer for standby.

The original driver CD provided by the printer manufacturer is also supported.

Tip: Please make sure that what you downloaded is the standard printer driver, and it include the INF file.

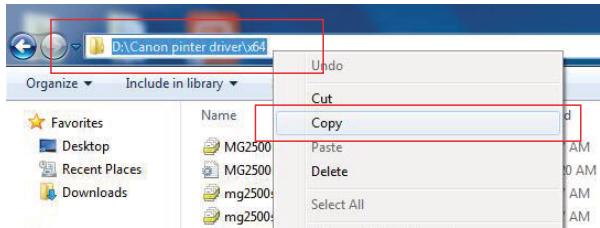
2. Right click the compression package of the downloaded driver file and Select "extract here..." to extract it.



3. Open the unzipped folder of the printer driver, click in the file path box above, select the file path (be sure to click in the file path box), and then right-click to copy the file path.

The file path format is usually (e.g.): F: \xxxxx\xxxxx

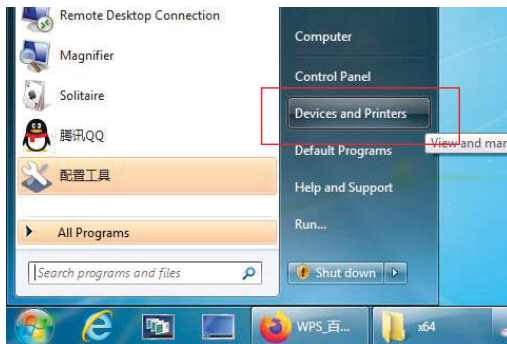
Not (e.g.): > PC > (F:) > XX folder



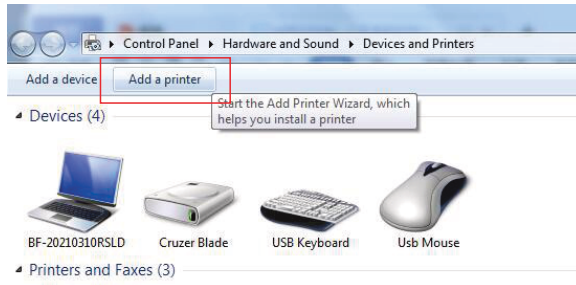
It copied above is the path of folder of containing the printer driven inf file which is required for later printer driver installation.

(2) Install a printer

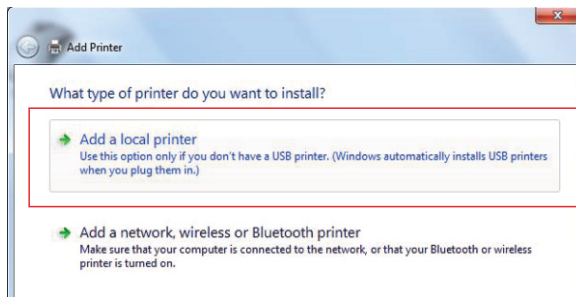
1. Click “Start” to find the “Devices and Printers”



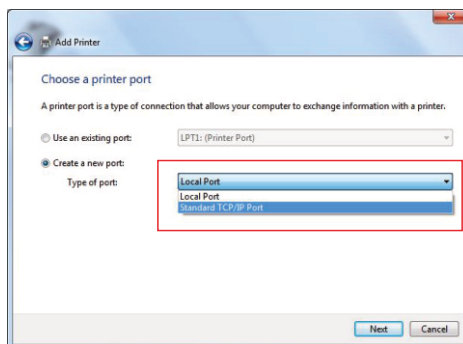
2. Select "Add a printer"



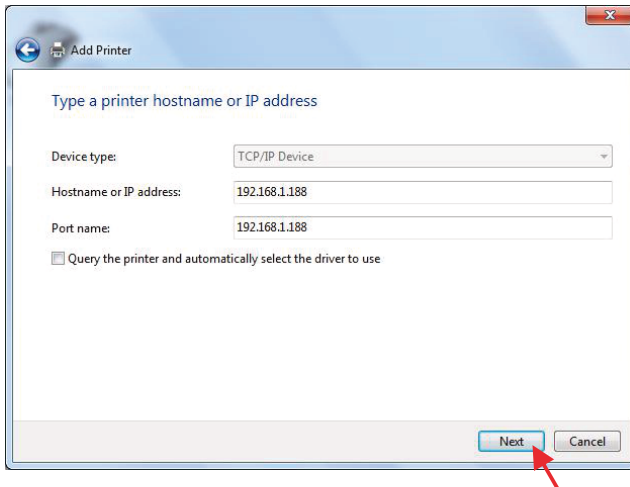
3. Add a local printer



4. Select "Create new port", Type of port: "Standard TCP / IP port" . and click "Next"



5. Enter IP address and port name. Uncheck "Query the printer and automatically select...", Then click "Next".

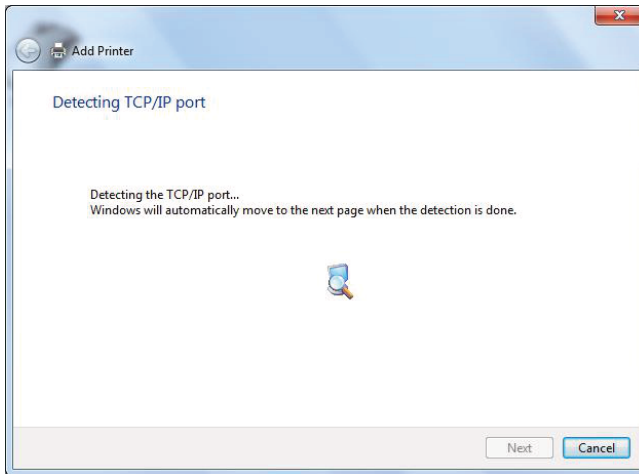


Tips:

For the IP address here, please enter the IP address that you get and record when setting up the wireless / wired connection.

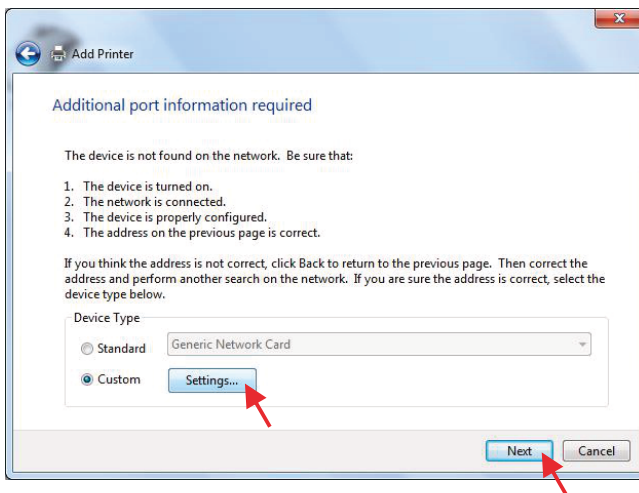
The port name is used to distinguish ports and can be named according to yourself.

6. Detecting the port, you need to wait patiently for 60 ~ 120 seconds



7. The detection port is finished. Generally, it will prompt that the device is not found and additional port information required.

Select "Custom" and click "Settings"



8. Set the port information. Here we need to check the IP address and set the port number, and then click "OK".

Please check which port on the server your printer is connected to. Then enter the port number which USB port your printer connected.

You can view it on the spot or enter the "Post list" page in the background of the server to view.

Port number range: 9100 ~ 9104

Configure Standard TCP/IP Port Monitor

Port Settings

Port Name: 192.168.1.188

Printer Name or IP Address: 192.168.1.188

Protocol

☒ Raw ☐ LPR

Raw Settings

Port Number: 9100

LPR Settings

Queue Name:

☐ LPR Byte Counting Enabled

☒ SNMP Status Enabled

Community Name: public

SNMP Device Index: 1

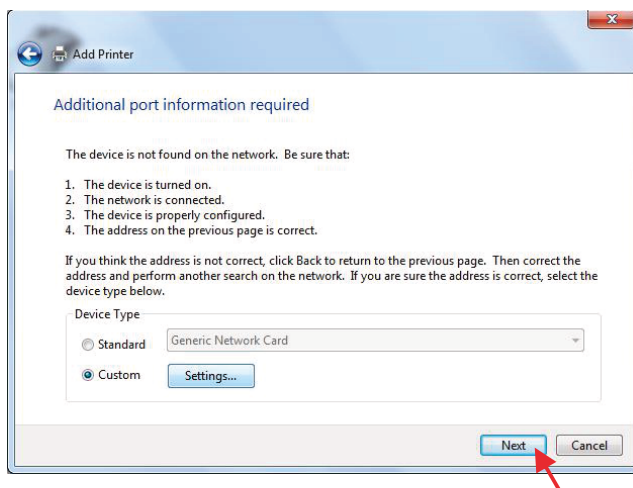
OK Cancel

Please check which port on the server your printer is connected to. Then enter the port number which USB port your printer connected.

Corresponding port number of the USB port :

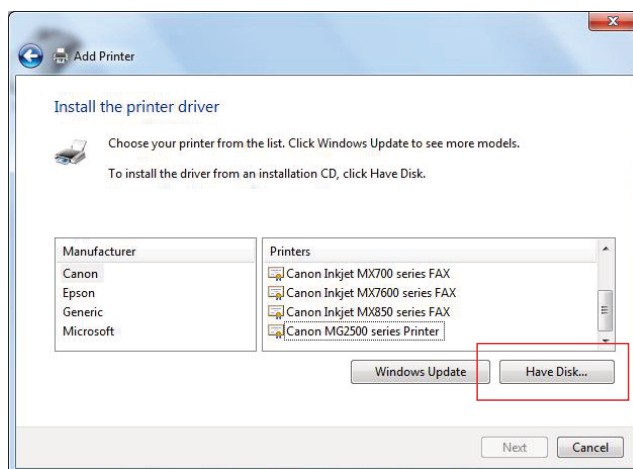
Usb1 is 9100, Usb2 is 9101, Usb3 is 9102, Usb4 is 9103...
(The USB ports may be different for different models of products)

9. Click “OK” to click “Next” .



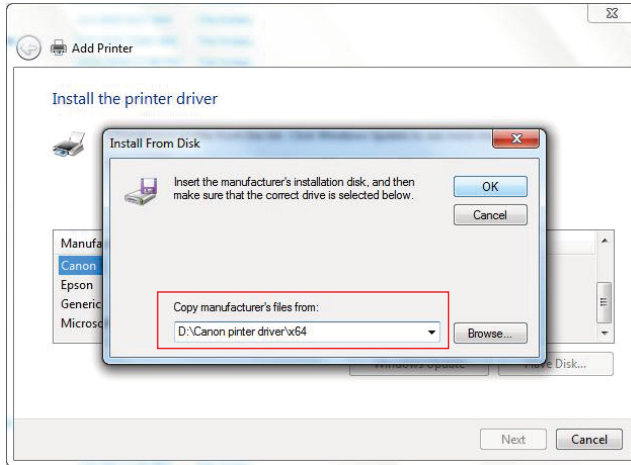
10. To install the printer driver, select "Have Disk".

If you can find the driver matching your printer model in the list of manufacturers on the left and the list of printer models on the right, you can directly select and install it. Needn't installing it from disk again!

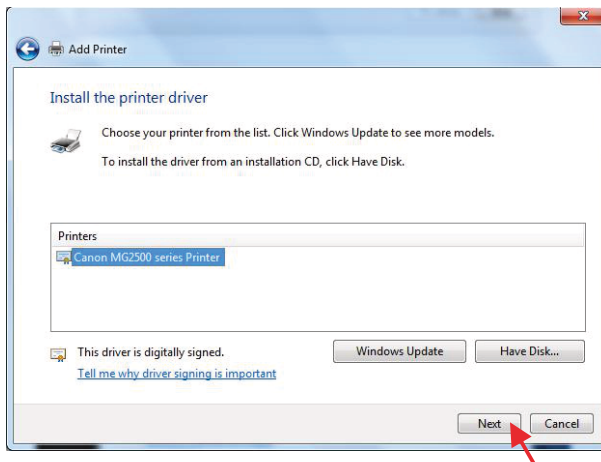


11. Paste the path of the folder containing the printer driver INF file that we copied earlier into the path box and click "OK".

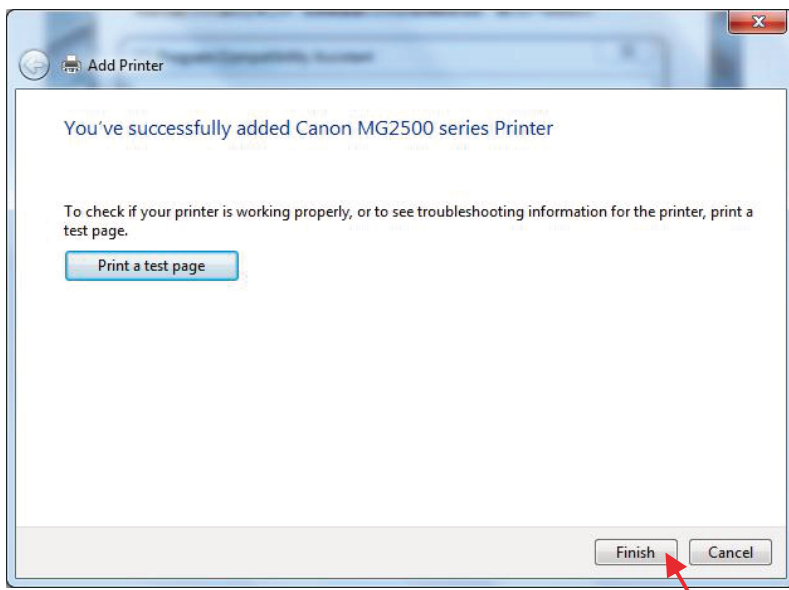
You can also "Browse" to find the "Inf" file in the driver folder and select to open it.



12. Select the printer you want to install and click "Next"



13. Then all are default and click "Next". If you have special needs, please modify them by yourself.



It's finished that install a local(LAN) printer on WIN 7 manually !